

ROUTE SELECTION

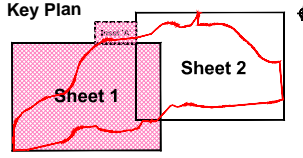
- Legend:**
- Scheme Study Area Boundary
 - Three Network
 - UPC Network
 - E-Net Network
 - Eircom Network
 - Proposed Eircom Route
 - BT Network

Includes Ordnance Survey Ireland data reproduced under OSI Licence number 2010/15CCMA/Galway County Council Unauthorised reproduction infringes Ordnance Survey Ireland and Government of Ireland copyright. © Ordnance Survey Ireland, 2010.

San áireamh tá sonraíocht Shuirbhíreacht Ordánais Éireann arna atáirgeadh faoi Cheadúnas OSI Uimh. 2010/15CCMA/Comhairle Contae na Galímhíche. Sárann an atáirgeadh meathúairithe cóipeacht Shuirbhíreacht Ordánais Éireann agus Riailas na hÉireann. © Suirbhíreacht Ordánais Éireann, 2010.

Disclaimer Note:
The constraints shown are draft only and subject to change. More detailed assessments, on-going studies and the information received from the public may result in changes to these constraints.

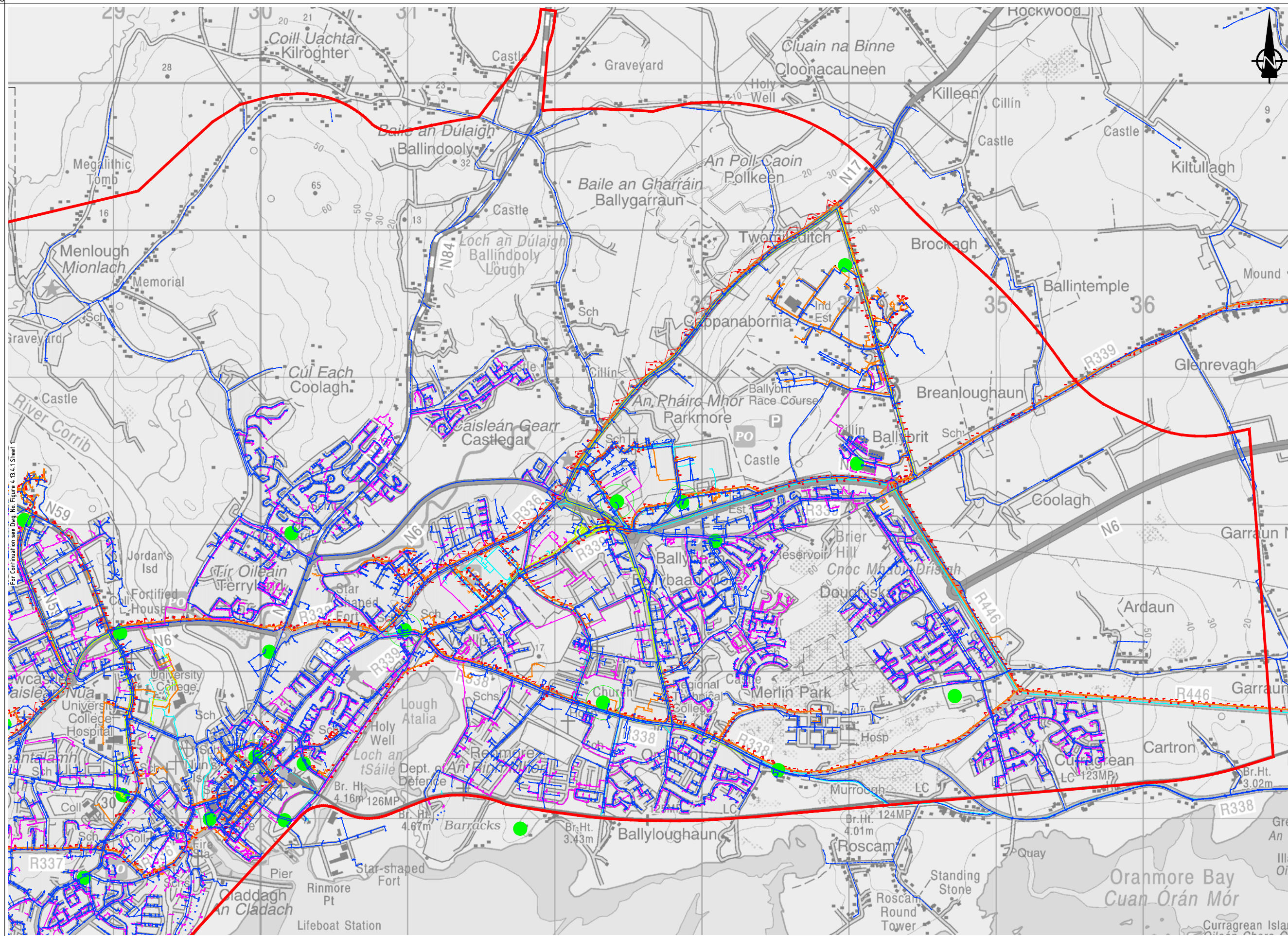
Nóta Séanta:
Tá na srianta atá léirithe ina bhfoirm dréacht, d'fhéadfaí athraithe teacht arthu. Is mar thoradh ar mheasúnaithe níos mionchruinne, ar staidéar leanúnach agus ar eolas ón bpobal go ndéanfar athruithe ar na srianta seo.



Job Title: N6 Galway City Transport Project
Scale: 1:25,000 @ A3
Date: August 2015

| Issue | Date | By | Chkd | Appd |
|-------|------------|----|------|------|
| I1 | 28/08/2015 | KJ | MH | EMC |

Drawing Title: Material Assets Non-Agricultural Existing Utility Networks : UPC, E-Net, Eircom, BT, Three. Sheet 01of 02
Drawing Status: Route Selection
Job No: 233985-00
Drawing No: Figure 4.13.4.1
Issue: 11



ROUTE SELECTION

- Legend:
- Scheme Study Area Boundary
 - Three Network
 - UPC Network
 - E-Net Network
 - Eircom Network
 - Proposed Eircom Route
 - BT Network



For Continuation see Dwg. No. Figure 4.13.4.1 Sheet

Includes Ordnance Survey Ireland data reproduced under OSI Licence number 2010/15CCMA/Galway County Council Unauthorised reproduction infringes Ordnance Survey Ireland and Government of Ireland copyright. © Ordnance Survey Ireland, 2010.

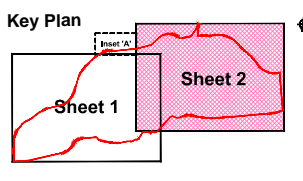
San áireamh tá sonraíocht Shuirbhíreacht Ordánais Éireann arna atáirgeadh faoi Cheadúnas OSI Uimh. 2010/15CCMA/Comhairle Contae na Galillíche. Sárann atáirgeadh neamhdáiríthe cóipeacht Shuirbhíreacht Ordánais Éireann agus Riailas na hÉireann. © Suirbhíreacht Ordánais Éireann, 2010.

Disclaimer Note:
The constraints shown are draft only and subject to change. More detailed assessments, on-going studies and the information received from the public may result in changes to these constraints.

Nóta Séanta:
Tá na srianta atá léirithe ina bhfoirm dréacht, d'fhéadfaí athraithe teacht orthu. Is mar thoradh ar mheasúnaithe níos mionchruinne, ar staidéir leanúnach agus ar eolas ón bpobal go ndéanfar athruithe ar na srianta seo.

Clients

ARUP



Consultant

ARUP

Corporate House
City East Business Park
Ballybrit, Galway, Ireland.

Tel +353 (0)91 460675
www.N6GalwayCity.ie
www.arup.ie

Job Title
N6 Galway City Transport Project

Scale
1:25,000 @ A3

Date
August 2015

| Issue | Date | By | Chkd | Appd |
|-------|------------|----|------|------|
| I1 | 28/08/2015 | KJ | MH | EMC |

Drawing Title
Material Assets Non-Agricultural
Existing Utility Networks : UPC, E-Net, Eircom, BT, Three. Sheet 02 of 02

Drawing Status
Route Selection

Job No
233985-00

Drawing No
Figure 4.13.4.2

Issue
11